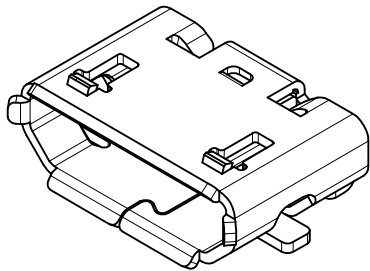
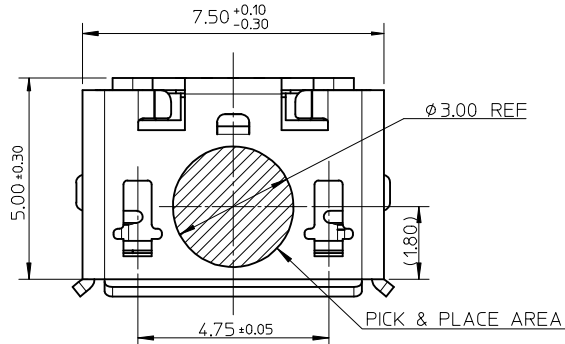
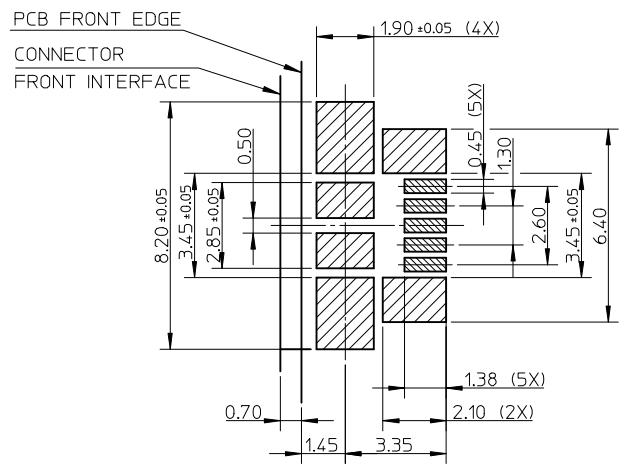
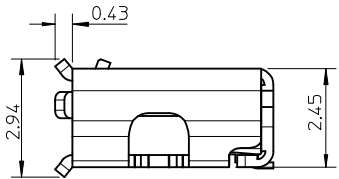
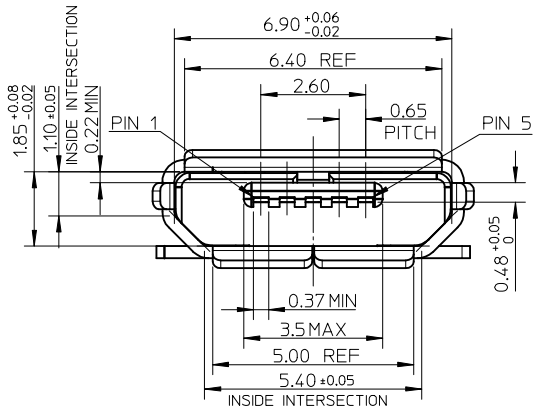


10 9 8 7 6 5 4 3 2 1



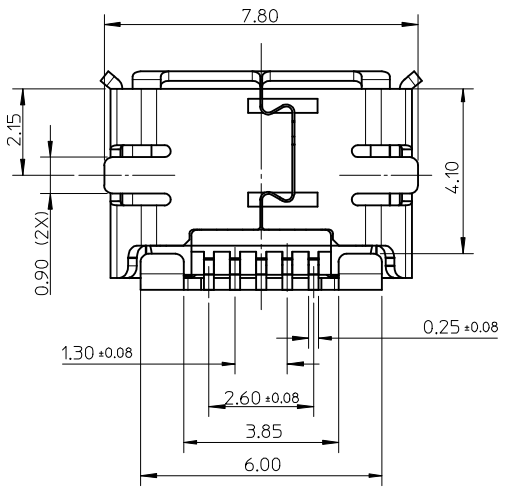
NOTES:

1. MATERIAL:
 HOUSING: LCP, BLACK, UL94V-0;
 TERMINAL: COPPER ALLOY, THICKNESS: 0.15mm;
 SHELL: STAINLESS STEEL, THICKNESS: 0.30mm.
2. PLATING:
 TERMINAL:
 CONTACT AREA: GOLD FLASH OVER MINIMUM 0.75MICRON Pd/Ni;
 SOLDER TAIL AREA: GOLD FLASH;
 UNDER PLATING: NICKEL 2.0MICRON MINIMUM.
 SHELL:
 MATTE TIN 3.8MICRON MINIMUM;
 UNDER PLATING: NICKEL 1.27MICRON MINIMUM.
3. TAIL & NAIL COPLANARITY 0.08mm MAXIMUM.
4. PRODUCT SPECIFICATION: PS-47346-001.
5. PACKAGE SPECIFICATION: PK-47346-001.
6. COMPLIANT TO RoHS DIRECTIVE 2002/95/EC AND ELV 2000/53/EC.



RECOMMENDED P.C.B. PATTERN LAYOUT
 GENERAL TOLERANCE: +0.05

5	GND
4	ID
3	D+
2	D-
1	VBUS
PIN	NAME
PIN ASSIGNMENT	



9 8 7 6 5 4 3 2 1

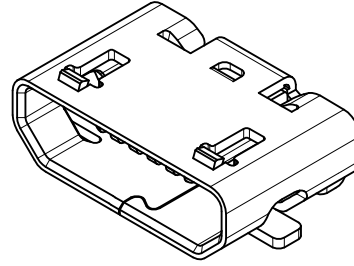
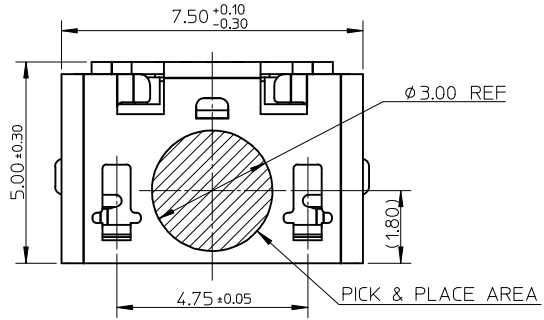
F
E
D
C
B
A

F
E
D
C
B
A

10 9 8 7 6 5 4 3 2 1

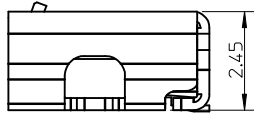
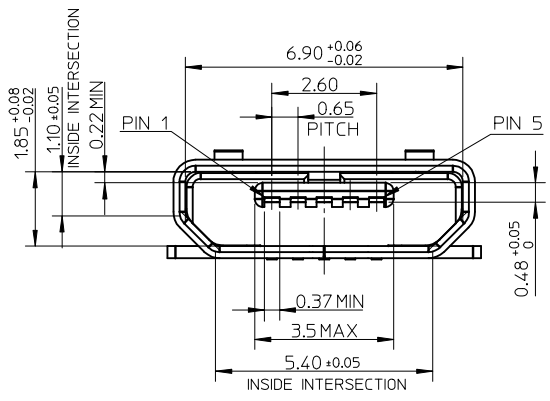
F

F



E

E

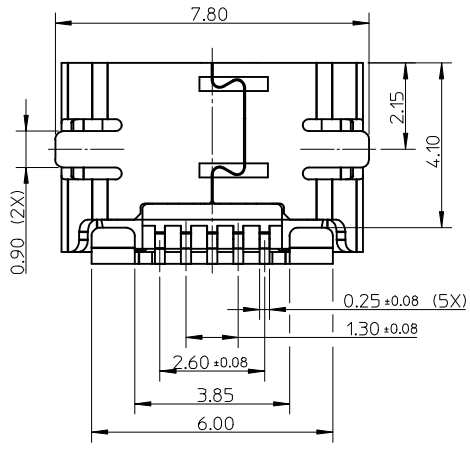


D

D

C

C



B

B

A

A

9 8 7 6 5 4 3 2 1