

**\*Material and plating**

Screw: M2.5, Steel, Zinc plating  
 Contact Material: Brass, Nickel plating  
 Plastic part: PA66, UL94V-0

**\*Mechanical property**

Operating Temperature: -40°C to +105°C  
 Maximum Temperature: +250°C per 5 seconds

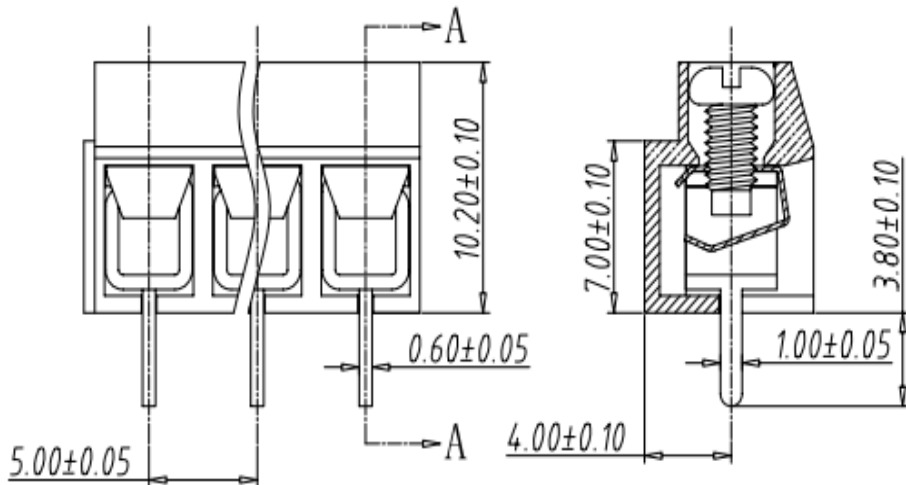
**\*Electrical Properties**

Voltage rating: 300V  
 Current rating: 10A  
 Contact Resistance: 20mohm  
 Insulation Resistance: 5000Mohm\1000V  
 Voltage Resistance: AC2000V\1Min  
 Wire type: 26-14AWG 1.5mm<sup>2</sup>  
 Torsional Moment: 0.4Nm (3.6lb.in)

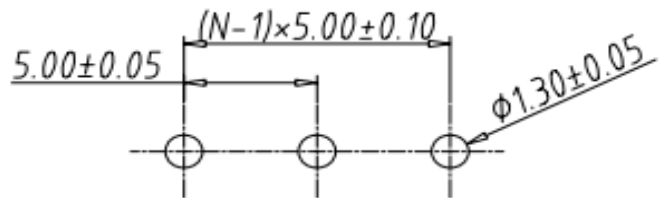
**Coding:**

WJ126V,WJ126R - X X X X X

- X: Type of board
- R: 90° V: 180°
- Plastic core color
- B: Blue R: Red
- H: Black G: Green
- Terminal plating specification
- O: Half-Gold-Tin 6: Tin
- Z: Tinplating
- Set Model
- S: Male P: female
- No. of Pins
- 02/03-24



剖面图 A-A



RECOMMEND PCB LAYOUT (TOLERANCE=±0.05)

X.	±0.20	X.	±2°
.X	±0.15	.X	±1.5°
.XX	±0.10	.XX	±1°
图页			
1:1		1\1	

纸张尺寸	mm	品名	欧式接线端子 间距5.00MM
	A4	产品系列	WJ126V 系列