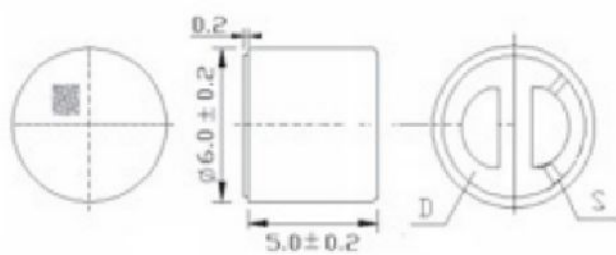


# Microphone

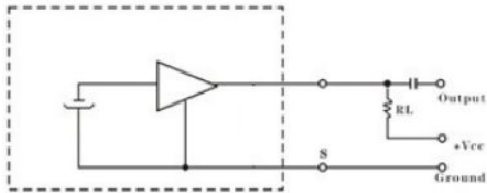


尺寸简图 Dimensions Drawing(Unit : mm)

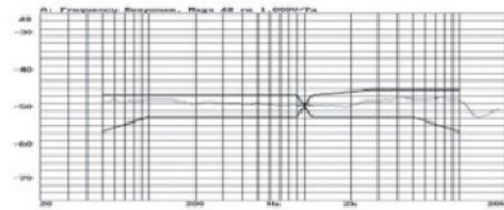


测试 (工作) 电路图  
Schematic Diagram

典型频响曲线  
Typical Frequency Response Curve



$C=1\mu F$   $R1=2.2K\Omega$   $Vcc=4.5V$



No. 序号	Item 项目	Specification 规格
1	Dimensions 尺寸	6.0*5.0mm
2	Sensitivity (0dB=1v/Pa 1000Hz) 灵敏度	-48--66dB
3	Frequency range 频响范围	50--20KHz
4	Directivity 方向特性	Omnidirectional 全指向
5	Impedance 阻抗	Low Impedance 低阻抗
6	Current Consumption 电流消耗	Max. 500uA
7	Standard Operation Voltage 标准工作电压	3V
8	Operation Voltage Range 工作电压范围	1.5--10V
9	S/N Range 信噪比	>58dB